



**GreenMongrel®**

# Veggie Bed

www.plasticforests.com.au

## Assembly of a GreenMongrel® Veggie Bed is quick and easy!

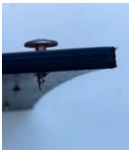
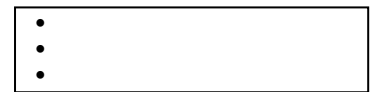
### Materials Required:

- GreenMongrel® Veggie Bed
- Screws (number of screws included depends on height of Veggie Bed)
- Hammer
- Phillip's head screwdriver or cordless drill



### Instructions:

- Unroll the plastic strip and leave it in the sun for several hours or until pliable. Alternatively, carefully immerse the roll in a bucket of hot water to increase flexibility.
- Lay the plastic strip on a firm surface.
- Space the screws evenly from top to bottom, approximately 25mm from the end, top and bottom edges as shown.
- Hammer the screws briefly to make a 'start' in the plastic, then use a screwdriver to screw all the way through the plastic strip.
- Partially rewind the screws until they are not protruding through the plastic strip.
- Form the plastic strip into a circle, overlapping the edges 6cm (approximately).
- Hold the two layers firmly together and screw the screw through both layers with a screwdriver to complete the circle. Then reverse the screws slightly so they not protruding unsafely (if needed).
- Place your Veggie Bed into position, ensuring the ground is level and clear of grass or roots.
- Fill with soil (see below) and your favourite flowers, herbs or vegetables.



### Tips:

A Veggie Bed depth of at least 300mm is recommended for most vegetables.  
 A layer of crushed rock or gravel may be used at the bottom of the vegetable bed to assist with drainage.  
 Choose a location with enough sunlight for the plants you are growing, usually at least 6 hours a day.  
 Beware screw points during assembly.

### Example of 2m x 200mm high Veggie Bed with 3 screws

2m Plastic Strip length

Height 200mm ↑

Finished Veggie Bed size (approx)



3 x 25L potting mix bags to fill (0.06m<sup>3</sup>)

↔ 600mm diameter \*

\*Diameter may be reduced by overlapping the edges more during assembly

### Volume of Soil Required

Circle diameter/width (approx)*	600mm	900mm	1250mm	1550mm
Height (mm)	200 / 300 / 400 / 600 / 725	200 / 300 / 400 / 600 / 725	200 / 300 / 400 / 600 / 725	200 / 300 / 400 / 600 / 725
Plastic Strip Length (m)	2m	3m	4m	5m
Volume of soil for 200mm (h)	0.06m <sup>3</sup>	0.14m <sup>3</sup>	0.25m <sup>3</sup>	0.39m <sup>3</sup>
Number of 25 litre potting mix bags (approx)	3	6	10	16
Volume of soil for 300mm (h)	0.09m <sup>3</sup>	0.21m <sup>3</sup>	0.37m <sup>3</sup>	0.58m <sup>3</sup>
Number of 25 litre potting mix bags (approx)	4	8	15	23
Volume of soil for 400mm (h)	0.12m <sup>3</sup>	0.27m <sup>3</sup>	0.49m <sup>3</sup>	0.78m <sup>3</sup>
Number of 25 litre potting mix bags (approx)	5	11	20	31
Volume of soil for 600mm (h)	0.18m <sup>3</sup>	0.41m <sup>3</sup>	0.74m <sup>3</sup>	1.16m <sup>3</sup>
Number of 25 litre potting mix bags (approx)	7	17	30	47
Volume of soil for 725mm (h)	0.2 m <sup>3</sup>	0.46m <sup>3</sup>	0.89m <sup>3</sup>	1.37m <sup>3</sup>
Number of 25 litre potting mix bags (approx)	8	18	35	54